



What it is and where



is at.

Rebecca Ritchie

What is it all about?

- National campaign
- 10% reduction in 2010
- Organisations and individuals
- Measures direct emissions only
- 'Baseline year' & 'Action year'



Why ?

- Leader in environmental management
- To go above and beyond
- Easy to report
- Engagement with the District
- Good PR



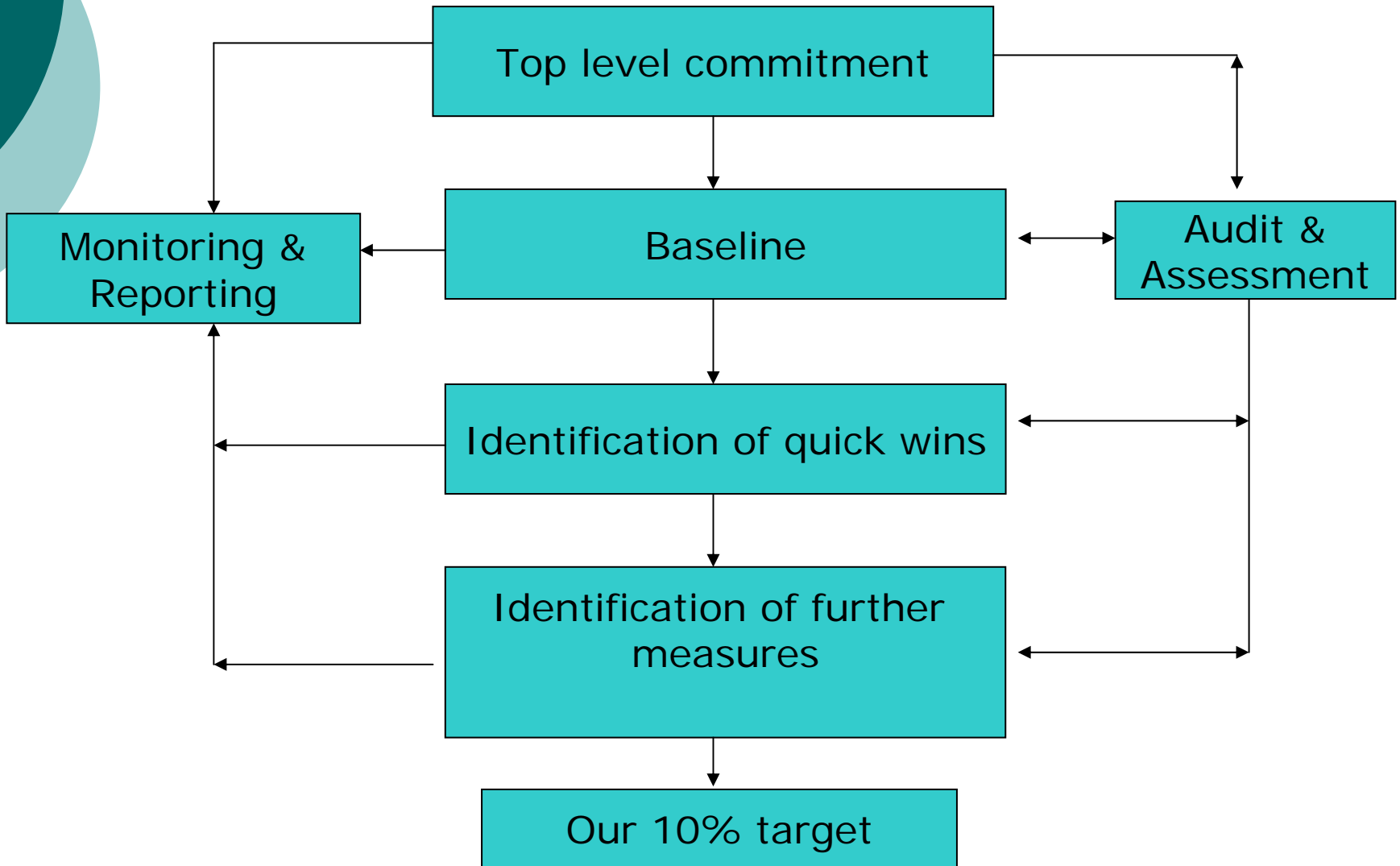
Who else is doing it?



10% - what it means for

- 285 tonnes – direct emissions only
- Action year March 2010 to April 2011
- Will prove challenging for 2 reasons:
 - Council has mixed building stock
 - Have already carried out many of the 'quick wins'

Our plan of action



How others are tackling it...



“The department will now cut emissions by 10% in 2010 on top of an existing commitment to reduce energy by 10% in 09/10”

Waitrose

“Transport is the biggest challenge for us”

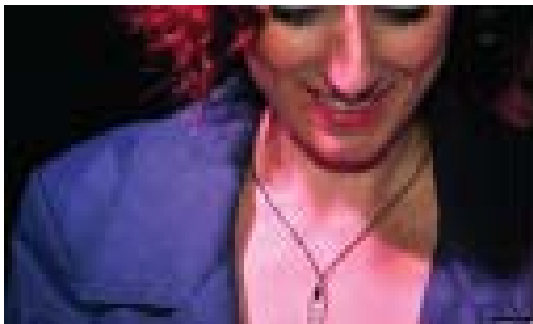
o Sharmi Chakrabati



“I share my life with my family and colleagues – there are things I can do at work and at home”

The wider community

- Lots of groups and individuals in the Lewes District have already signed up;
- Excellent opportunity for collaboration between LDC, local business and the community....





Thank-you, any questions?

www.1010.org.uk